

ALORA

ESTATE



KEY FEATURES

- SANDOWN, BLOUBERG, CAPE TOWN
- SECURE ESTATE
- BIOMETRIC ACCESS CONTROLLED
- UNIQUE ARCHITECTURAL DESIGN
- PREMIUM FINISHES
- PRIVATE GARDENS
- DOUBLE-STOREY
- COVERED BRAAI/BARBEQUE AREA
- OVEN, HOB AND EXTRACTOR
- ELECTRIC FENCE
- WIFI-READY

ALORA
ESTATE





ALORA

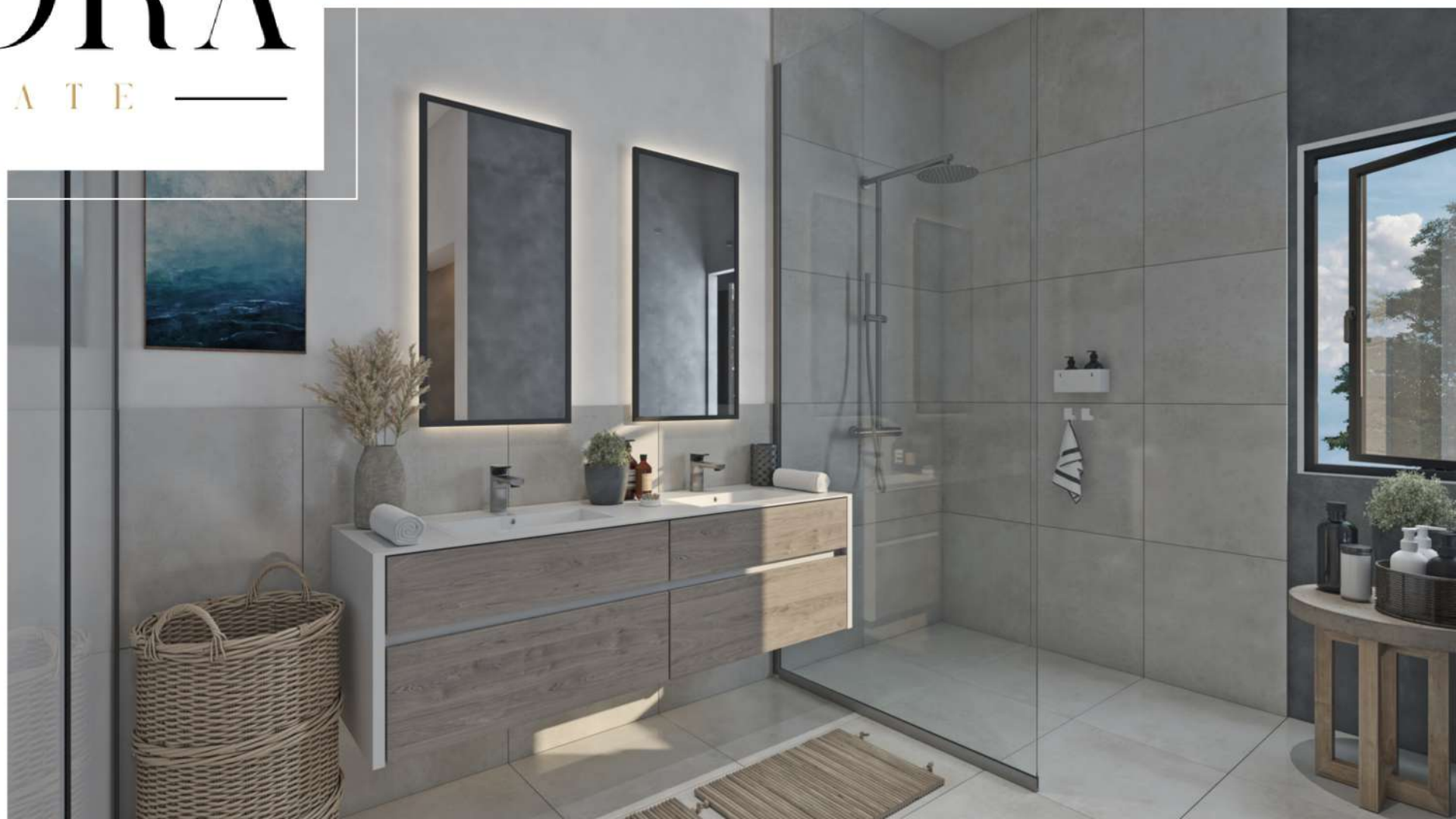
— ESTATE —





ALORA

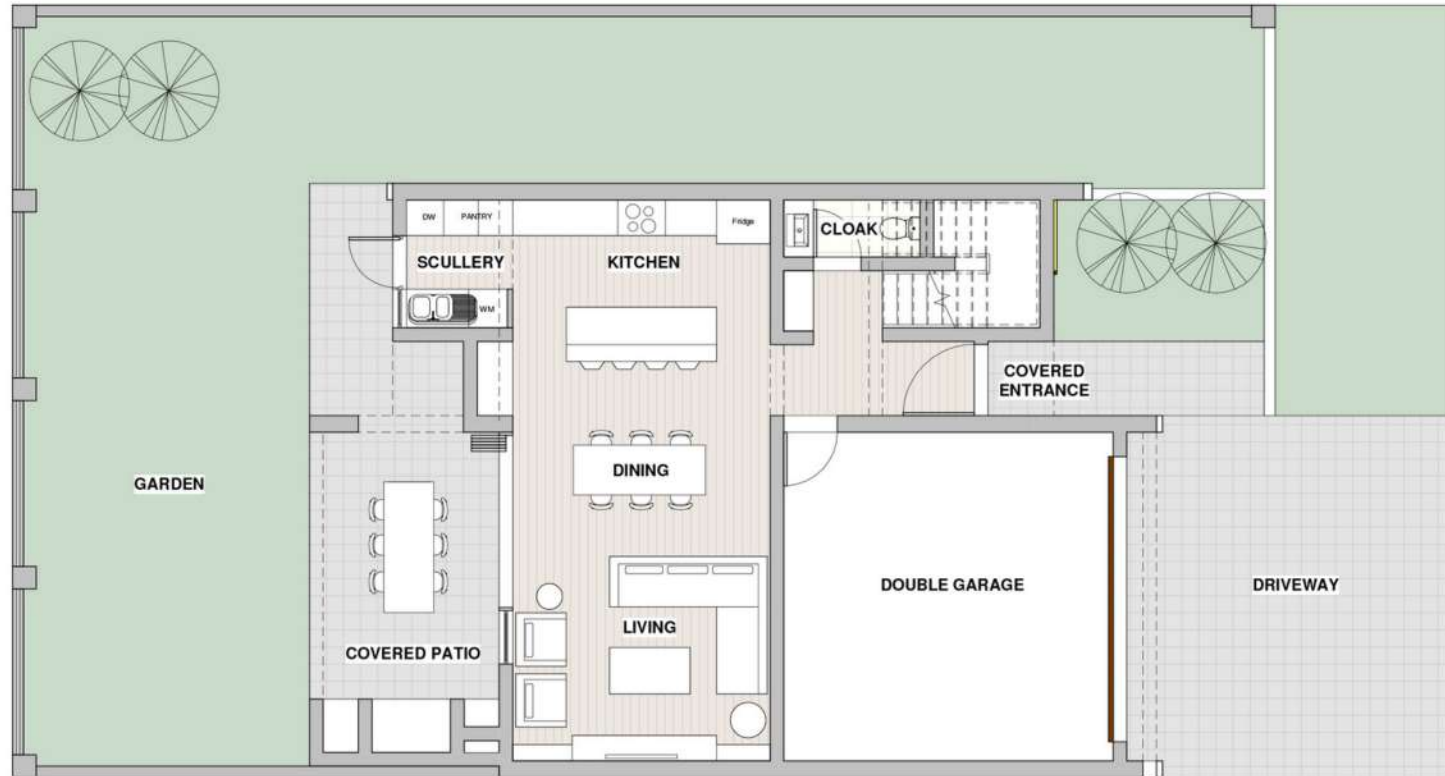
— ESTATE —



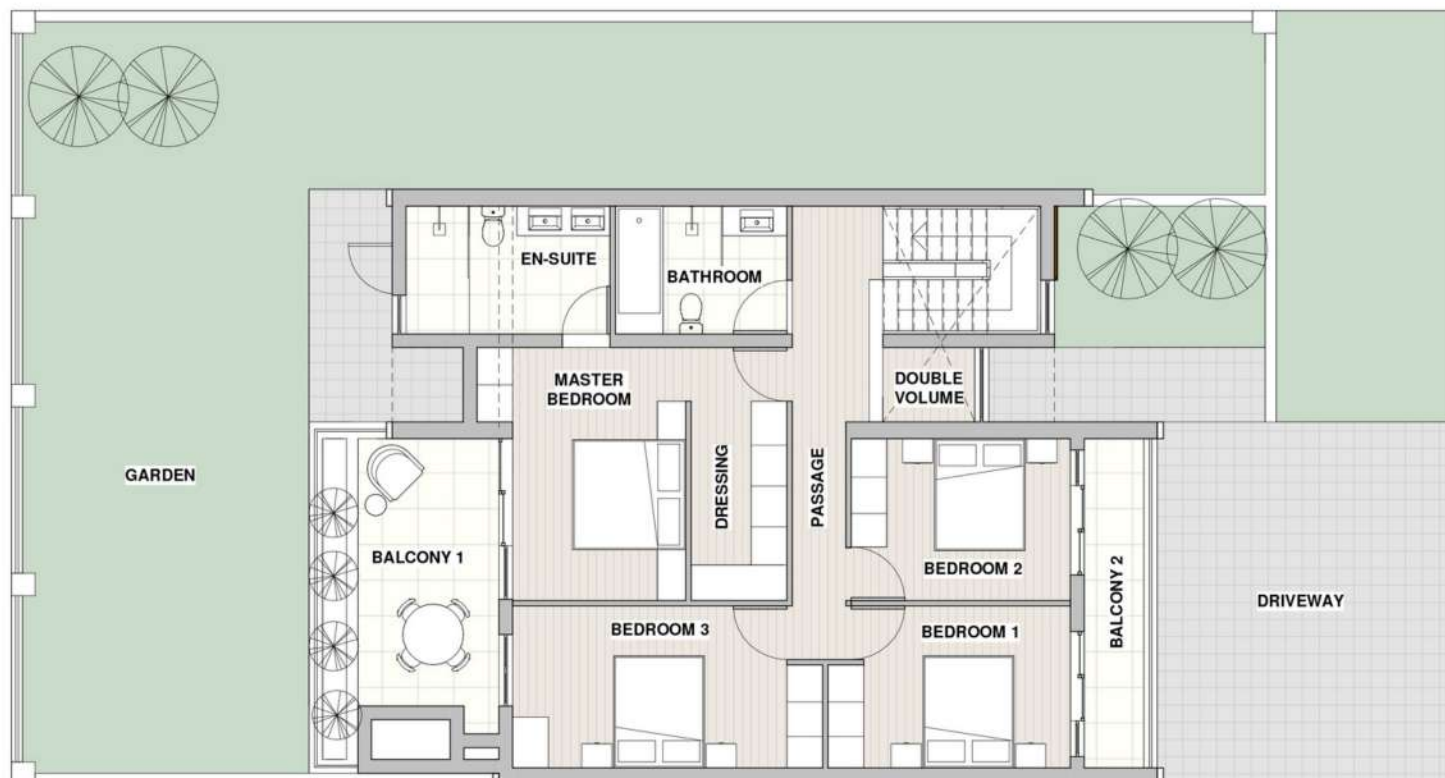
CORNER UNIT

ALORA
— ESTATE —

GROUND FLOOR



FIRST FLOOR



Corner Units

4 BEDROOMS
2.5 - 3.5 BATHROOMS

INTERNAL SIZE
205.5M2 - 244M2

PATIOS, BALCONIES,
COVERED ENTRANCE
44M2 - 70M2

GARDEN
134.5M2 - 165M2

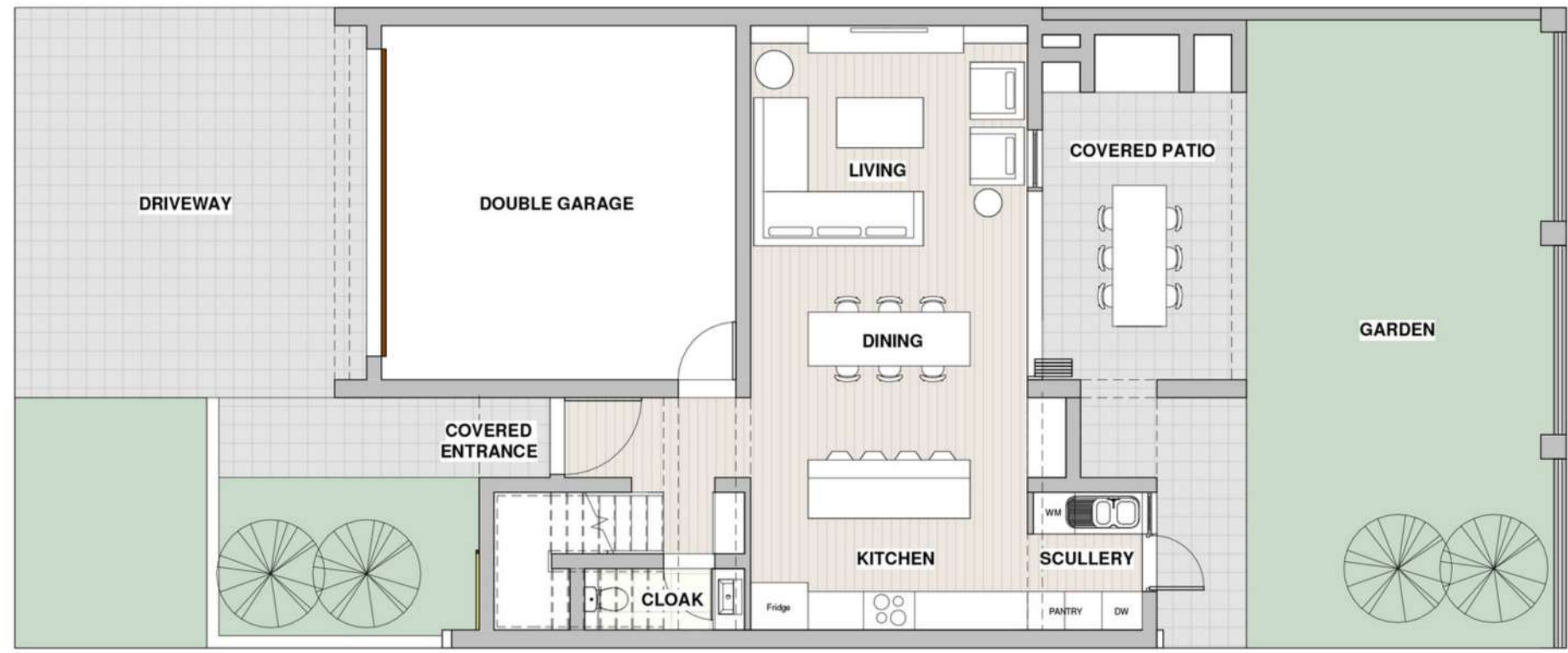
TOTAL SIZE
250M2 - 314M2

ALL FLOOR PLANS ARE FOR ILLUSTRATIVE PURPOSES ONLY AND DO NOT CONSTITUTE A LEGALLY BINDING DOCUMENT. SUBJECT TO CHANGE. E&OE.

THREE BEDROOM UNIT

ALORA
ESTATE

GROUND FLOOR



FIRST FLOOR



3-Bed Units

3 BEDROOMS
2,5 BATHROOMS

INTERNAL SIZE
168.5M2 - 198M2

**PATIOS, BALCONIES,
COVERED ENTRANCE**
19.5M2 - 48M2

GARDEN
36M2 - 68.5M2

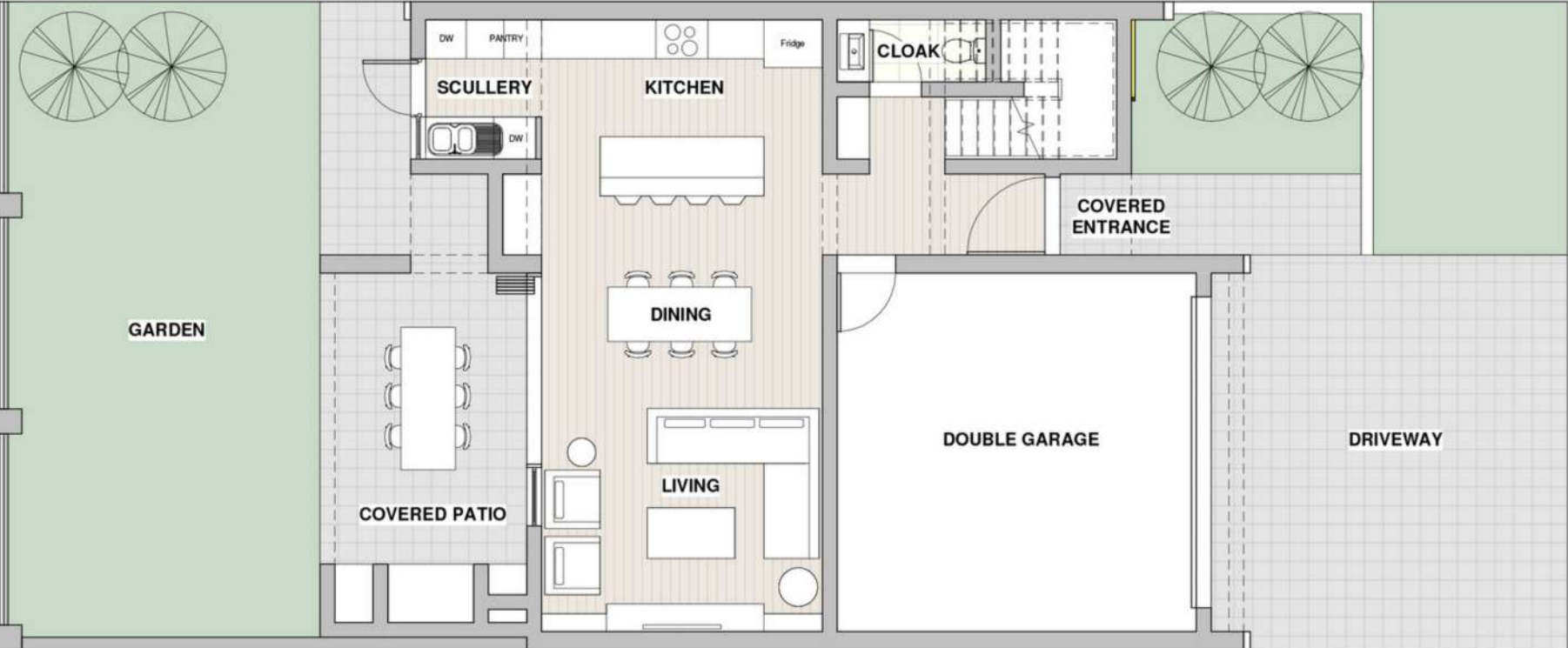
TOTAL SIZE
188M2 - 246M2

ALL FLOOR PLANS ARE FOR ILLUSTRATIVE PURPOSES ONLY AND DO NOT CONSTITUTE A LEGALLY BINDING DOCUMENT. SUBJECT TO CHANGE. E&OE.

FOUR BEDROOM UNIT

ALORA
ESTATE

GROUND FLOOR



4-Bed Units

4 BEDROOMS
2,5 BATHROOMS

INTERNAL SIZE
206M2

PATIOS, BALCONIES,
COVERED ENTRANCE
44M2

GARDEN
67M2 - 135M2

TOTAL SIZE
250M2

FIRST FLOOR



ALL FLOOR PLANS ARE FOR ILLUSTRATIVE PURPOSES ONLY AND DO NOT CONSTITUTE A LEGALLY BINDING DOCUMENT. SUBJECT TO CHANGE. E&OE.

RENDER VIEW:

THREE BEDROOM
FIRST FLOOR



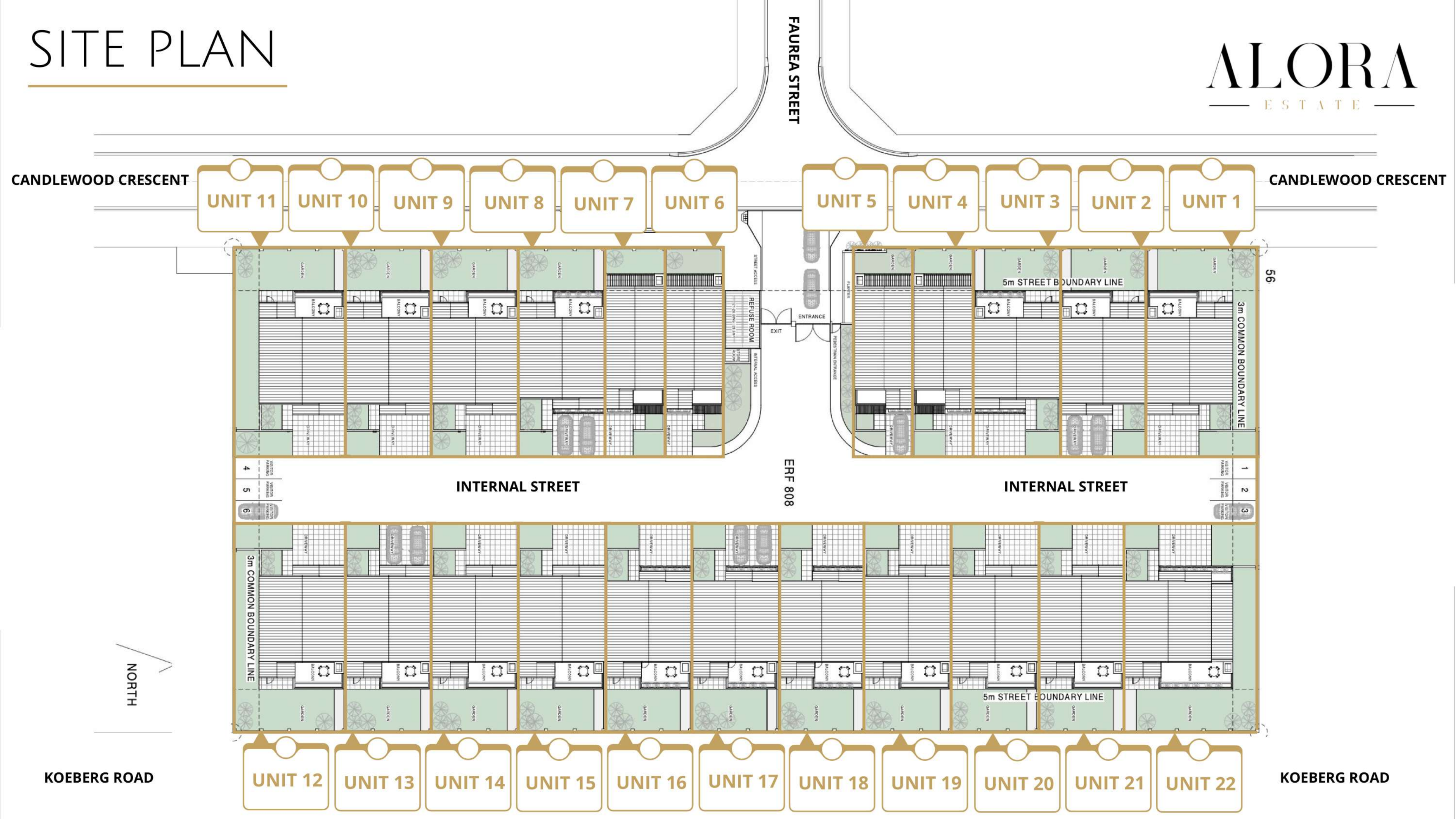
RENDER VIEW:

THREE BEDROOM
GROUND FLOOR



SITE PLAN

ALORA
ESTATE



FAUREA STREET

CANDLEWOOD CRESCENT

CANDLEWOOD CRESCENT

UNIT 11 UNIT 10 UNIT 9 UNIT 8 UNIT 7 UNIT 6

UNIT 5 UNIT 4 UNIT 3 UNIT 2 UNIT 1



4
5
6

1
2
3

INTERNAL STREET

INTERNAL STREET

ERF 808

56



UNIT 12 UNIT 13 UNIT 14 UNIT 15 UNIT 16 UNIT 17 UNIT 18 UNIT 19 UNIT 20 UNIT 21 UNIT 22

KOEBERG ROAD

KOEBERG ROAD

NORTH



CONTACT

SALES:

DANI@STREETS Ahead.CO.ZA
+27 (0) 82 556 5811

MARKETING:

COURTNEY@STREETS Ahead.CO.ZA
+27 (0) 82 456 5974

DEVELOPMENT:

WESSEL@WALLACE.CO.ZA
+27 (0) 82 406 7291

